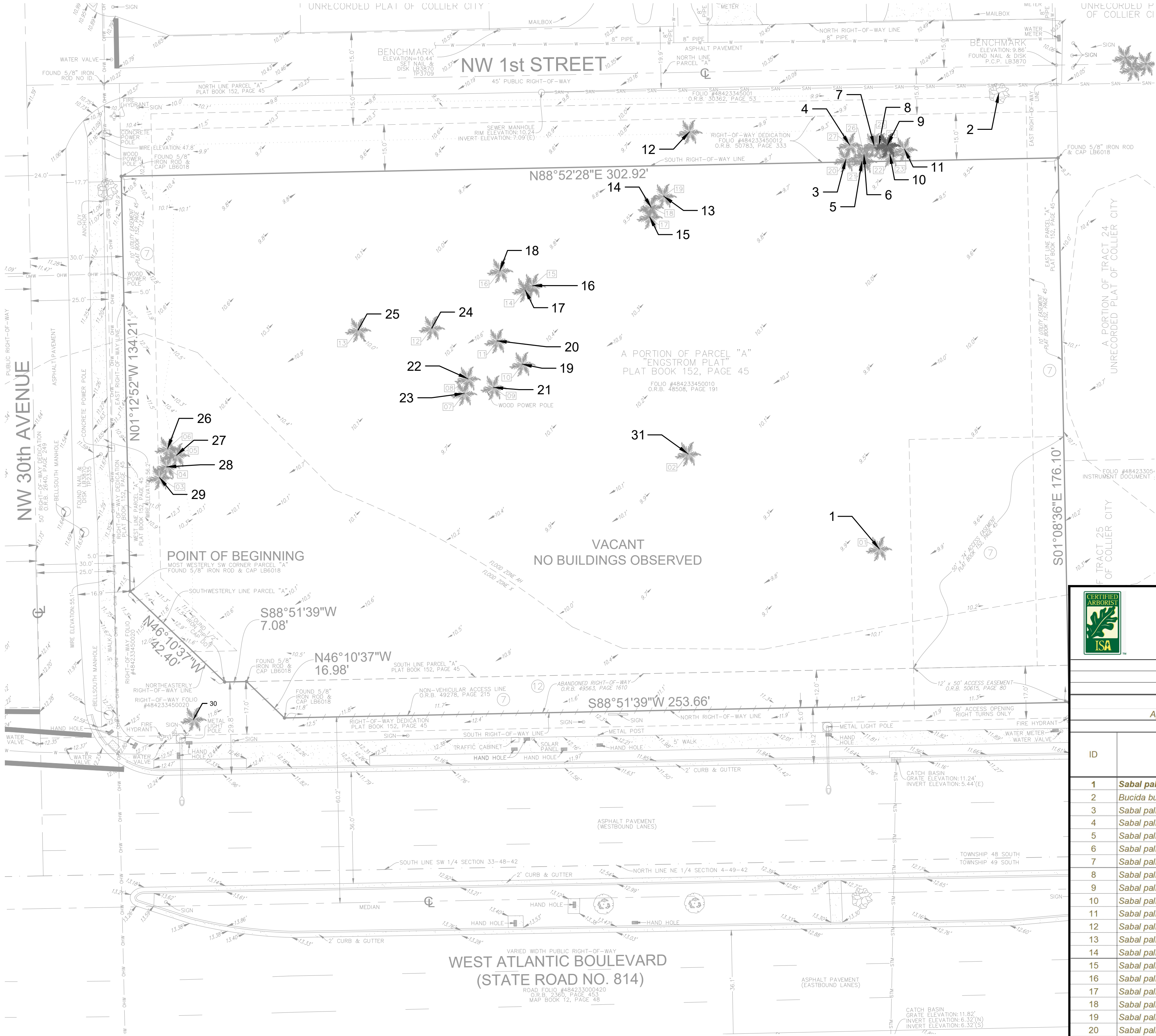




TREE DISPOSITION PLAN



		Paola A. West, ISA Certified Arborist FL - 6295A PLANW3ST 10152 Indiantown Road, Unit 159 Jupiter, Florida 33478 954-529-9417 pwest@planw3st.com							
Project: Rising Tide Car Wash Client: RISING TIDE CAR WASH - PARKLAND, INC.									
Location: W ATLANTIC BLVD POMPANO BEACH FL 33069 (484233450010)									
TREE ASSESSMENT & APPRAISAL									
Bolded indicate Specimen Trees; *Source: Florida Invasive Species Council 2023 List of Invasive Plant Species									
Appraisal Based on the FLORIDA CHAPTER ISA DETERMINING THE MITIGATION VALUE OF ROADSIDE VEGETATION (FLORIDA RULE 14-10.057)									
Field Date: 5/31/2025 Appraisal Date: 6/3/2025									
ID	Scientific Name	Common Name	DBH (in)	Palm Height (ft)	Condition Rating	Condition Rating	Comments	Disposition (Protect/Remove/Relocate)	Appraised Value
1	Sabal palmetto	Cabbage palm	18	16	80%	81%	Booted	Remove	\$270
2	Bucida buceras	Black Olive	15		75%	78%		Remove	
3	Sabal palmetto	Cabbage palm	11	20	80%	84%		Remove	
4	Sabal palmetto	Cabbage palm	12	14	80%	84%	Booted	Remove	\$237
5	Sabal palmetto	Cabbage palm	12	24	80%	84%		Remove	\$406
6	Sabal palmetto	Cabbage palm	12	28	80%	84%		Remove	\$473
7	Sabal palmetto	Cabbage palm	9	24	80%	84%		Remove	\$406
8	Sabal palmetto	Cabbage palm	12	28	80%	84%		Remove	\$473
9	Sabal palmetto	Cabbage palm	12	24	80%	84%		Remove	\$406
10	Sabal palmetto	Cabbage palm	12	28	80%	84%		Remove	\$473
11	Sabal palmetto	Cabbage palm	12	20	75%	78%		Remove	\$317
12	Sabal palmetto	Cabbage palm	12	20	75%	78%		Remove	\$317
13	Sabal palmetto	Cabbage palm	15	24	75%	78%	Booted	Remove	\$380
14	Sabal palmetto	Cabbage palm	17	32	80%	84%		Remove	\$541
15	Sabal palmetto	Cabbage palm	11	34	80%	84%		Remove	\$575
16	Sabal palmetto	Cabbage palm	10	24	70%	72%		Remove	\$355
17	Sabal palmetto	Cabbage palm	10	24	75%	78%		Remove	\$380
18	Sabal palmetto	Cabbage palm	10	28	75%	78%		Remove	\$444
19	Sabal palmetto	Cabbage palm	16	28	75%	78%	Booted	Remove	\$444
20	Sabal palmetto	Cabbage palm	16	28	75%	78%		Remove	\$444
21	Sabal palmetto	Cabbage palm	14	28	40%	44%	Burned	Remove	\$237
22	Sabal palmetto	Cabbage palm	14	20	40%	41%	Booted, burned	Remove	\$169
23	Sabal palmetto	Cabbage palm	13	20	40%	41%	Booted, burned	Remove	\$169
24	Sabal palmetto	Cabbage palm	11	24	55%	56%		Remove	\$279
25	Sabal palmetto	Cabbage palm	12	24	80%	81%		Remove	\$406
26	Sabal palmetto	Cabbage palm	11	28	80%	84%		Remove	\$473
27	Sabal palmetto	Cabbage palm	14	12	90%	91%	Booted	Remove	\$228
28	Sabal palmetto	Cabbage palm	14	28	90%	91%		Remove	\$533
29	Sabal palmetto	Cabbage palm	9	28	70%	72%		Remove	\$414
30	Sabal palmetto	Cabbage palm	17	18	80%	81%		Remove	\$304
31	Sabal palmetto	Cabbage palm	12	18	75%	78%	Booted	Remove	\$285
Total Non-Specimen Removal (Inches)			15	TOTAL MITIGATION		Total Palm Appraised Removal (Dollars)		\$10,838	

General Notes

3		
3		
2	DRC SUBMITTAL	10/29/25
1	DRC SUBMITTAL	07/15/25
No.	Revision/Issue	Date



PLANW3ST
10152 INDIANTOWN RD.
159
JUPITER, FL 33478
954-529-9417
planw3st.com

Project Name and Address

RISING TIDE CAR WASH

W ATLANTIC BOULEVARD
POMPANO BEACH FL, 33069

Project
2025-014

Date
7/15/2025

Scale
1" = 20'

Sheet
TD-1